

FROM THE OFFICE OF
SENATOR STANLEY CHANG
East Honolulu Community Newsletter

May 2023

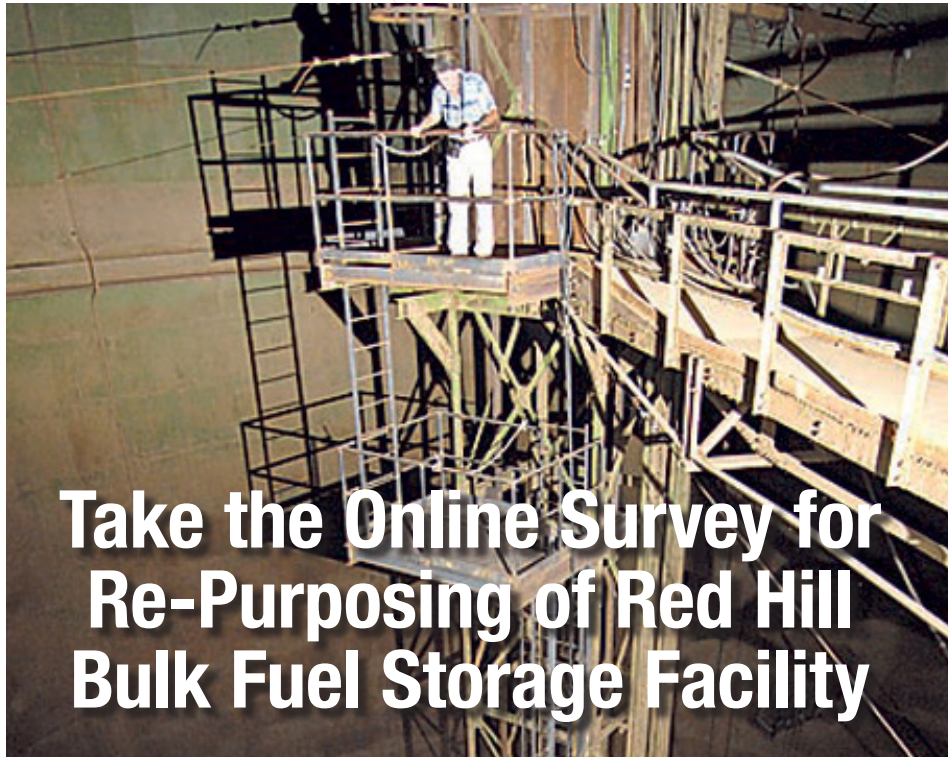


Image Credit: Honolulu Star-Advertiser

Take the Online Survey for Re-Purposing of Red Hill Bulk Fuel Storage Facility

The Navy is inviting the public to participate in two surveys as part of an outreach program to solicit public recommendations for non-fuel repurposing alternatives of the Red Hill Bulk Fuel Storage Facility (RHBFSF) after it is defueled and closed.

The first survey is now available online to the general public and can be accessed at the website: redhillrepurposing.com. The deadline to complete the online survey is May 31, 2023, and it is available to everyone on O'ahu. It will give the public the opportunity to provide suggestions for the non-fuel repurposing of Red Hill, identify how people are hearing and learning about Red Hill, and ask the community to identify additional information they would like to know. Responses to the survey are confidential and anonymous, and no personal information will be included with the results.

A separate survey will be conducted later this summer to a geographically representative set of households from across O'ahu with an oversampling of households in the Red Hill area. This survey will be conducted by mail with households in geographic areas surrounding Red Hill and via the internet with households island wide.

Navy intends to use this community input on the recommended beneficial non-fuel reuse of the facility in a separate report due to Congress in February 2024. The Navy will continue to keep the public informed on the status of the surveys via periodic press releases and other communication outreach efforts, including but not limited to providing updates to community groups, neighborhood boards, Native Hawaiian organizations and other interested parties.

▶ CALL US

808-586-8420

▶ EMAIL US

Stanley Chang
Senator, District 9 (D)
senchang@capitol.hawaii.gov

Arielle Blacklow
Committee Clerk
a.blacklow@capitol.hawaii.gov

Theresa Ng
Office Manager
t.ng@capitol.hawaii.gov

Madelyn Waddell
Newsletter Editor
mswad@hawaii.edu

▶ HANDY CONTACTS

State Pothole Hotline
808-586-7852

City Pothole Hotline
808-768-7777

State Homelessness
gov.homelessness@hawaii.gov
808-586-0193

City Homelessness
complaints@honolulu.gov
808-768-4381

Abandoned Vehicles
808-733-2530

Building Permits
808-768-8000

Trash Collection
808-768-3200

Street Light Repair
808-768-5300

IN THE COMMUNITY

As Heavy Rains Continue, We Need to Do Our Part to Keep Our Ocean Clean

by Madelyn Waddell



Kāhala Beach has seen an influx of litter after the heavy rains lately. Residents have found discarded clothes, shopping carts, and other trash post-storms in the canals and beaches.

Reports show that the recent after-hours drop-offs at the Kāhala Goodwill have led to the theft of these items and an increasing number of goods that end up on the beach or in the canal. It is believed that thieves take the Goodwill donations for themselves and leave what they do not want near the Molowai Stream. When heavy rains pour, the items

and already-present debris mix with the downpour to form runoff; this runoff makes its way to the beach and ocean.

The waste in the ocean has negatively affected marine species all over the world. It is common knowledge that items like plastic bags and can holders directly affect sea life, but many are unaware that people are impacted too. For example, clothing items that end up on the beach and in the water are composed of synthetic materials like polyester and plastics that are not biodegradable. As more and more objects end up in the ocean, no matter how large or small, they turn into microplastics that deposit into the seafood that we eat, causing a threat to human and marine life.

The debris in the Molowai stream is being removed with a dump truck in Kahala, but residents are hoping for a more permanent solution that prevents further build-up. The General Manager of Kāhala Mall, Ezy Paeste, informed Hawai'i News Now that there are plans to install a fence along the canal to prevent

a further extreme pile-up on the beaches. But for now, here is what we can do.

These large pile-ups have been occurring primarily because of runoff caused by the heavy rain. We can prevent this by reducing excessive water usage, which stresses our sewer systems during periods of heavy rain and creates wastewater that flows into the ocean. Furthermore, we must reduce waste and be more mindful of the trash being discarded. Throwing something away doesn't mean 'away', especially here in Hawai'i. For us, it is simply out of sight, out of mind, but many of these goods do not go away.

If you choose to donate your items, Goodwill strongly encourages people to drop off their donations within business hours so that they are properly stowed away and locked up after business hours.

Keeping trash and debris out of our waters is something that we will have to work towards together. As city officials plan to avoid excess situations such as these, we must do our small part in keeping our ocean clean.

MOTHER'S DAY KEIKI WORKSHOP

City Mill is hosting a keiki workshop to make mom a one-of-a-kind gift as special as she is. Keiki are invited to make a photo flowerpot for Mother's Day gift using terra cotta pot, paper, popsicle sticks and markers. City Mill team members will provide instructions and materials. This is a free 30-minute session.

There are only 10 slots per session, so register asap at [eventbrite.com/e/mothers-day-keiki-workshop-hawaii-kai-tickets-607820205597](https://www.eventbrite.com/e/mothers-day-keiki-workshop-hawaii-kai-tickets-607820205597)! Only keiki need to register.

Saturday, May 13, 10am-12pm
City Mill - Hawai'i Kai
333 Keahole Street, 96825

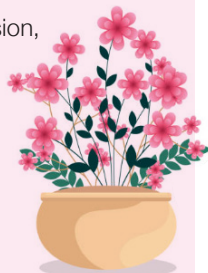


Image Credit: Shutterstock

ADOPT A HEN

There are countless hens that need a forever home in Hawai'i. Hens are a great addition to a family with their curious personalities, gentle and calm demeanor. Toddlers see them as "big bird"—mesmerized by being able to feed them by hand! Hens also provide fresh and organic eggs with no antibiotics or hormones; they lay an infertile egg each day without mating with a rooster. You can also save thousands of dollars in expensive yearly costs for terminators using toxic baits that poison the soil and groundwater, as hens eat centipedes, roaches, spiders, slugs, snails, aphids, crickets, ticks, maggots, mosquito larvae, scorpions, frogs, rhino beetles and mice.

Call Joelle Seashell at **808.799.0253** to inquire about adopting your very own hen.

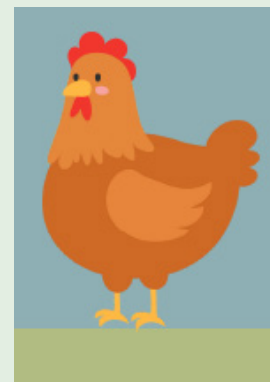


Image Credit: Joelle Seashell

MOVING FORWARD

Helping Hawai'i's Homeless Families

Coming out of the COVID-19 pandemic, more families are experiencing homelessness than ever before. You can help our community's struggling keiki by supporting Family Promise of Hawai'i.

Donations

Family Promise welcomes donations of household goods. Household items and everyday essentials with the greatest need occasionally change, so please check Family Promise's donation page for updates: familypromisehawaii.org/wish-list?blm_aid=19051.

Currently, the following items have the greatest need:

- Air Mattresses & Pumps
- Box Fans
- Twin Sheet Sets
- Blankets
- Feminine Hygiene Products
- Feminine Deodorant
- Full-Size Toiletries (Body Wash, Shampoo & Conditioner)
- Pots & Pans Set
- Gift Cards (Ross, Walmart, Groceries & Gas, etc.)

Family Promise also asks for donations of "Welcome Home" kits, which are gifted to families when they move into housing. They include the following items in stackable containers:

- Paper towels
- Toilet paper
- Laundry detergent
- Sponge
- Dish soap
- Shampoo, conditioner, and soap/body wash
- Toothpaste and toothbrushes
- New set of pots and pans

Volunteering

Through the 'Ohana Dinners program, you can sign up to deliver meals to families in Family Promise's shelter program. Currently, this is a contactless delivery. If you sign up, details including the number of individual children and parents and any dietary restrictions will be provided.

Family Promise will also be starting the Keiki and Parent program this year, which will allow volunteers to tutor and do fun activities for the children. Please check their volunteer page for future updates.

SUPPORT THE HAWAII FOODBANK

This past month, the State Capitol hosted the 24th Annual State Employees' Food Drive to support the Hawai'i Foodbank. Hawai'i Foodbank operates two facilities, one on O'ahu and one on Kaua'i, to facilitate the distribution of food to families in need. The foodbank partners with more than 200 food agencies, running five programs to serve our keiki to kūpuna. To help support Hawai'i Foodbank's efforts, you can volunteer or donate at: hawaiifoodbank.org/donate.



Image Credit: Hawai'i Foodbank

DISPOSING OLD MEDICATIONS

[Myoldmeds.com](https://myoldmeds.com) identifies free, easy, and convenient options to properly dispose of unwanted household prescription and over-the-counter medicines.

Find a year-round location at myoldmeds.com to dispose of unwanted, unused, or expired household medicines or request a free in-home disposal kit. [Myoldmeds.com](https://myoldmeds.com)'s searchable database lists over 22,000 convenient locations in pharmacies, law enforcement agencies, government offices, and healthcare facilities. All locations are verified twice a year.

Follow the **instructions exactly as provided** including labeling information and Medication Guides accompanying the medicine. If you have any questions, ask your healthcare providers.

In particular, follow any **storage** instructions as provided on the medicine label and on the patient information accompanying the medicine.

Keep the medicine in a **secure** location, either in a medicine cabinet or safely away from people or pets that might come in contact with it.

When medicine is unwanted, unused, or expired, **dispose** of it immediately, properly, and according to local regulations. Remove or destroy all identifying personal information on the medication labels or packaging to protect your privacy.

Image Credit: Pharmaceutical Product Stewardship Work Group



Image Credit: Family Promise of Hawai'i

YOUR CONCERNS

COVID-19 on the Rise

AVOID THE 3 Cs to prevent COVID-19 clusters

To prevent the occurrence of clusters, keep the 3 Cs from overlapping.



Image Credit: Hawaii State Department of Health

COVID-19 has been on the uptick in recent weeks, with cases rising just over 1000 a day statewide according to data from the Department of Health. While hospitals do have capacity for incoming patients, it's important to protect yourself so you don't end up in one! Most importantly, make sure your vaccinations are up to date. You can get vaccinated at any local pharmacy, such as Longs/CVS. Also, remember to wear a mask in public places to protect both yourself and others. Let's keep our communities safe!

Spring Into Cleaning and Savings

Believe it or not, a little cleaning and some basic maintenance can help lower your energy use! Here are a few key tips to keeping your household running in tip-top shape while reducing your energy bill.

Tip 1: Clean AC Filters

Cleaning your air conditioning filters increases efficiency and can reduce energy consumption by up to 15%. Most households should do this at least once a month. But if you have pets, you may need to clean them more often.

Tip 2: Replace Old Cables and Powerstrips

Things like power strips and cables can get old and ineffective over time, wasting energy. Getting a new power strip or cable can provide better surge protection, and they can reduce annual household energy use by up to 10%.

Tip 3: Check Solar Panel Efficiency

If you have solar water heating, we recommend scheduling routine maintenance once every 5 years. A tune up can make sure the panels are running as efficiently as possible and the contractor will also let you know if they need replacement.

KOKO HEAD SHOOTING COMPLEX REOPENED

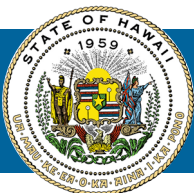
The pistol and rifle ranges at the Koko Head Shooting Complex (KHSC) are reopened for public use. While shooting will resume on these public ranges, current staffing levels (due to non-medical resignations), existing conditions at KHSC, and the anticipated high demand for this popular outdoor range will result in temporary changes to operations for the firearm ranges:

- Pistol and rifles ranges will operate as one firing line, due to damaged separation wall
- Firearm ranges open on weekends, Saturdays & Sundays, from 8 a.m. to 4 p.m.
- Free online reservations required to book 1 hour 20-minute shooting slot (visit pros.hnl.info)
- No metal targets or .50 caliber BMG allowed
- Pistol targets may be placed at 25 or 50 yards
- Rifle targets may be placed at 50 or 100 yards

Please visit the KHSC official website for additional information and updates about the complex and its operations: bit.ly/kokoheadrange.



Image Credit: Koko Head Shooting Complex



FROM THE OFFICE OF
SENATOR STANLEY CHANG

Hawai'i State Capitol, Room 226
415 South Beretania Street
Honolulu, Hawai'i 96813